



Product Catalogue

November 17th, 2023



Safe Box Steel Structure (SBSS) specializes in the design and manufacturing of products used to modify shipping and storage containers. Since its establishment in 2012 in Saskatoon, Saskatchewan, Canada, SBSS has been leading the industry and contributing to the development of container modification accessories.



CONTAINER MODIFICATION WORLD (CMW) products are sold in Canada, and exported to the United States and Europe.

We also developed world-class container modification planning software. "**PlanMyCan.com**" is public and free to be used by customers worldwide.

Currently our line of shipping container accessory products include: Security Shelving & Racking, Moving & Securing, Windows, Roll Up Doors, Man Doors, Ventilation, Modular Strut Systems, Steel Stud Framing, Miscellaneous Accessories.

SECURITY

Shipping Container Lock Box	Page 3
Shipping Container Lock Box and CMW 80mm Lock Bundle (KD)	Page 4
Universal Lock Box and CMW 80mm Lock Bundle (KD)	Page 5
CMW Shipping Container Shackle Lock - LOCK-80MM (KA & KD)	Page 6
Shipping Container Floor Patch Kit	Page 7
Past Plug Fork Pocket Covers for Shipping Containers/Sea Cans	Page 8

VENTILATION

Bin Air 30 Louvered Gable Vent	Page 9
Bin Air 45 Louvered Gable Vent	Page 10
Bin Air 60 Louvered Gable Vent	Page 11
Bin Air Skylight Roof Vent	Page 12
Bin Air 400 CFM Solar Powered Roof Vent	Page 13
Airlift T10 10" Exhaust Fan w/Temperature & Humidity Controller Powered by AC Infinity	Page 14

MOVING & SECURING

Twist 'N' Jack Container Lifter	Page 15
Dovetail Deck Mount Twist Lock	Page 16
Twist Lock Stacking Pin for Shipping Containers	Page 17
Quick Attach Tie Downs	Page 18
Quick Attach Container Skids (Left and Right)	Page 19
ISO 1611 Corner Castings for Shipping Containers/Sea Cans	Page 20
Shipping Container Bridge Fitting Clamp for Sea Cans	Page 21
G80 SEA Crane Hooks / Lifting Hooks	Page 22
Rubber Rams For Shipping Containers (2 Pack)	Page 23

SHELVING & RACKING

Bolt-On D-Ring Lashing Points for Shipping Containers	Page 24
18" Galvanized Bolt-On Shelving Brackets	Page 25
9" Heavy Duty Bolt-On Shelving Brackets	Page 26
Container Strut Mount (CSM) Pine Rack (16" 20" & 24")	Page 27
Hanging Hook Shelving Brackets for Shipping Containers and Sea Cans	Page 28

WINDOWS & DOORS

42" Side Wall and 48" End Wall Window Framing Kits	Page 29
42" Side Wall and 48" End Wall Vinyl Windows	Page 30
Roll-Up Doors	Page 31
Man Door	Page 32
Partition Walls	Page 33
Door Flashing Kit	Page 34
Door Seals	Page 35

MODULAR STRUT SYSTEMS (MSS & CSM)

Container Strut Mount (CSM) Brackets	Page 36
Container Strut Mount (CSM) Premium Upper Decker Roof Bracket	Page 37
Container Strut Mount (CSM) Premium Roof Brackets	Page 38
Modular Strut Systems (MSS) Standard Strut Mount Brackets	Page 39

STEEL STUD FRAMING

12 Gauge Aluminum Framing Brackets for Steel Stud Framing	Page 40
Steel Stud Framing Kit 2 Corner Casting Covers with Steel Stud Brackets	Page 41
Exterior Wood Framing Bracket Kit	Page 42
Interior Wood Framing Bracket Kit	Page 43

Electrical

Heavy Duty 120V AC Port Plugs for Shipping Containers	Page 44
---	-------------------------



shopify

Buy Now

LOCKBOX
CONTAINER SECURITY SYSTEM

Shipping Container Lock Box For Right Hand Door

Description and Purposes

- Made in Canada
- Durable powder coat finish - textured black
- Fits: 8', 9', 10', 20', 40', 45', 48' & 53' Shipping Containers (RH)
- Includes (4) Grade 5 Carriage Bolts 3" long for non-insulated sea cans.
- Includes (4) Grade 5 Carriage Bolts 4.5" long for insulated sea cans, intermodal containers & van trailers.

CMW-5A-120-0425

Price: \$99.95



shopify

Buy Now

LOCKBOX
CONTAINER SECURITY SYSTEM

Shipping Container Lock Box and CMW 80mm Lock Bundle (KA or KD) For Right Hand Door

Description and Purposes

- Made in Canada
- Durable powder coat finish - textured black
- Fits: 8', 9', 10', 20', 40', 45', 48' & 53' Shipping Containers (RH)
- Includes (4) Grade 5 Carriage Bolts 3" long for non-insulated sea cans.
- Includes (4) Grade 5 Carriage Bolts 4.5" long for insulated sea cans, intermodal containers & van trailers.
- Includes 80mm durable hardened steel CMW Lock.

CMW-5A-120-0724

Keyed Alike

Price: \$129.95

CMW-5A-120-0725

Keyed Different

Price: \$129.95



shopify

Buy Now

LOCKBOX
 CONTAINER SECURITY SYSTEM

Universal Shipping Container Lock Box and CMW 80mm Lock Bundle (KD)

For Left & Right Hand Doors

Description and Purposes

- Made to protect Left and Right Hand Man Doors, Shipping Containers/Sea Cans (all sizes) & Cargo Trailers.
- Durable powder coat finish - textured black
- Fits: 8', 9', 10', 20', 40', 45', 48' & 53' Shipping Containers (RH)
- Includes (4) Grade 5 Carriage Bolts 3" long for non-insulated sea cans.
- Includes (4) Grade 5 Carriage Bolts 4.5" long for insulated sea cans, intermodal containers & van trailers.
- Includes 80mm durable hardened steel CMW Lock
- Made in Canada.



CMW-5K-120-0724

Price: \$149.95



shopify

Buy Now

LOCKBOX
CONTAINER SECURITY SYSTEM

CMW Shipping Container Shackle Lock - 80mm (KA & KD)

Description and Purposes

- Constructed out of durable hardened steel and is triple chrome plated making the lock uniquely suited to outdoor and marine environments.
- Built Strong - 100% Secure!
- 80mm, 3-1/8"



CMW-5A-130-0038
Keyed Alike

Price: \$34.95

CMW-5K-130-0039
Keyed Different

Price: \$34.95



shopify

Buy Now

Shipping Container Floor Patch Kit

Description and Purposes

- Our Shipping Container Floor Patch Kit comes with a laser-cut, .105" thick galvanized steel plate that you can easily screw into your wooden container floor to cover the damaged area.
- Galvanized Steel (durable and will not rust)
- Laser-cut edges and screw holes



CMW-7K-300-0732

12" x 12"

Price: \$39.95

CMW-7K-300-0733

12" x 24"

Price: \$59.95

CMW-7K-300-0734

24" x 24"

Price: \$99.95

CMW-7K-300-0735

24" x 48"

Price: \$149.95

CMW-7K-300-0736

48" x 48"

Price: \$199.95



Pest Plug Fork Pocket Covers

Description and Purposes

- A major problem many shipping container owners experience during the winter is rodents sneaking in underneath through the forklift pockets, or having mice/birds nesting in the corner castings.
- Although shipping containers are rodent-free, and they won't be able to gnaw their way into the steel container, rodents such as skunks, foxes, rats or rabbits can still make the underside of the container their home during winter. These animals could cause health issues or problems later on.



20 FT New & Used Containers
w/ Side Fork Pockets



3 End Wall Fork Pocket Plugs



4 Side Fork Pocket Plugs + 2 Door End Fork Pocket Plugs + 2 End Wall Fork Pocket Plugs

CMW-4K-500-0389

20FT New & Used Containers (4 Side Fork Pocket Plugs + 2 Door End Fork Pocket Plugs + 2 End Wall Fork Pocket Plugs)

Price: \$179.95

CMW-4K-500-0391

20FT New & Used Containers (4 Side Fork Pocket Plugs + 2 Door End Fork Pocket Plugs + 2 End Wall Fork Pocket Plugs)

Price: \$179.95

CMW-4K-500-0390

20FT New & Used Containers (4 Side Fork Pocket Plugs + 2 Door End Fork Pocket Plugs + 2 End Wall Fork Pocket Plugs)

Price: \$279.95



shopify

Buy Now



Big Air 30 Louvered Gable Vent

(with & without Screen Mesh Attachment Option)

Description and Purposes

- Comes with a marking guide to make cutting a hole as easy as possible! Rivets and self-tapping screws are also included (we recommend using rivets).
- 30 Sq. In. Net Free Area, 9" x 10 1/2" Rough Opening.
- High UV Resistant Polypropylene and Laser Cut Aluminum Frame will never rust!
- Registered US Design Patent
- Utilizes Duraflor CSA Approved Gable Vent.



CMW-1K-110-0354

Without Screen Mesh

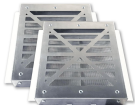
Price: \$179.95 (2 Pack)



CMW-1K-110-0706

With Screen Mesh Option

Price: \$229.95 (2 Pack)



CMW-1K-100-0685

Screen Mesh Attachment (2 Pack)

Price: \$49.95



shopify

Buy Now

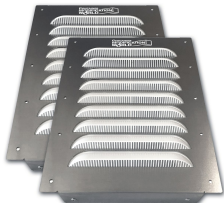


Big Air 45 Louvered Gable Vent

(with & without Screen Mesh Attachment Option)

Description and Purposes

- Comes with a marking guide to make cutting a hole as easy as possible! Rivets and self-tapping screws are also included (we recommend using rivets).
- 45 Sq. In. Net Free Area, 9-inch x 14-inch Rough Opening.
- High UV Resistant Polypropylene and Laser Cut Aluminum Frame will never rust!
- Registered US Design Patent
- Utilizes Duraflor 680812 CSA Approved Gable Vent.



CMW-1K-110-0683

Without Screen Mesh

Price: \$199.95 (2 Pack)

CMW-1K-110-0684

With Screen Mesh Option

Price: \$229.95 (2 Pack)

CMW-1K-100-0686

Screen Mesh Attachment (2 Pack)

Price: \$49.95



shopify

Buy Now



Big Air 60 Louvered Gable Vent

(with & without Screen Mesh Attachment Option)

Description and Purposes

- Comes with a marking guide to make cutting a hole as easy as possible! Rivets and self-tapping screws are also included (we recommend using rivets).
- 60 Sq. In. Net Free Area, 9" x 17 7/8" Rough Opening.
- High UV Resistant Polypropylene and Laser Cut Aluminum Frame will never rust!
- Registered US Design Patent
- Utilizes Duraflo 680812 CSA Approved Gable Vent.

CMW-1K-110-0355

Without Screen Mesh

Price: \$249.95 (2 Pack)

CMW-1K-110-0707

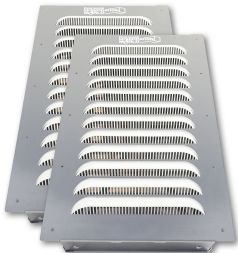
With Screen Mesh Option

Price: \$319.95 (2 Pack)

CMW-1K-100-0686

Screen Mesh Attachment (2 Pack)

Price: \$69.95





shopify

Buy Now



Big Air SkyLight Roof Vent

Description and Purposes

- Eliminate Moisture, Heat and Fumes while providing a free natural light source!
- State of the art computer modeled frame design which adapts the Translucent Duraflo Shed light In-Roof Vent.
- Easy Installation!
- Engineered to be installed anywhere on shipping container, van trailers & all wood construction building rooftops.



CMW-1K-210-0549

Price: \$249.95



shopify

Buy Now



Big Air 400 CFM Solar Powered Roof Vent

Description and Purposes

- To be used in conjunction with 2 Big Air 45 intake vents for maximum air exchange.
- High 400 CFM provides a complete air exchange every 3 minutes in a 20 ft sea can and every 6 minutes in a 40 ft sea can under ideal conditions.
- Anti-UV/Freeze Construction
- Removable Aluminum Bug Filter
- Unique Metal Framing Kit Designed for Shipping Containers
- Quiet Operation, Fully Assembled - No On or Off switch!

CMW-1K-230-0419

Fan Only

Price: \$349.95

CMW-1K-230-0420

Fan + 2 Big Air 45

Price: \$549.95

CMW-1K-230-0421

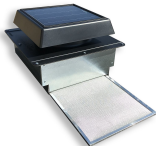
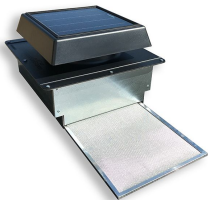
Fan + 2 Big Air 45 w/Screen Mesh

Price: \$599.95

CMW-1K-230-0741

FRAME ONLY to Fit Canada Go Green 4 Seasons Solar Roof Vent

Price: \$249.95





shopify

Buy Now



Airlift T10 10" Exhaust Fan w/Temperature & Humidity Controller Powered by AC Infinity

Description and Purposes

- The custom-engineered aluminum framing kit allows the T10 Air Lift Exhaust Fan to be installed anywhere on shipping container sidewalls, end walls, or doors – from floor to ceiling.
- The T10 Air Lift Exhaust Fan w/ Temperature and Humidity Controller by AC Infinity comes with a marking guide to make cutting a hole as easy as possible! Rivets and self-tapping screws are also included (we recommend using rivets).
- The T10 Air Lift Exhaust Fan will exchange the air about every 4.5 minutes. If you need more air exchanges, you will have to double the above quantity.

CMW-1K-220-0350

T10 Air Lift Exhaust Fan Only

Price: \$474.95 (2 Pack)

CMW-1K-130-0352

10" Aluminum Gravity Louvers (2 PACK)

Price: \$499.95 (2 Pack)

CMW-1K-240-0063

Screen Mesh Attachment (2 Pack)

Price: \$964.95





shopify

Buy Now



Twist 'N' Jack Container Lifter

Description and Purposes

- Adapter for Jacking a Corner of a Shipping Container
- Yellow Powder Coated Steel
- Made in Canada
- Easy to Use!



CMW-5K-210-0550

Price: \$279.95



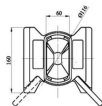
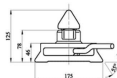
shopify

Buy Now

Dovetail Deck Mount Twist Lock (2 Pack) (for ISO 1611 Shipping Container)

Description and Purposes

- Weldable to steel or use with foundation
- Manual, left-locking
- Heat Treated: Drop Forged, Tempered and Quenched
- Carbon Steel
- Hot Dipped Galvanized Surface



Left closed



Right closed

CMW-5K-310-0727

Price: \$199.95



shopify

Buy Now

Twist Lock Stacking Pin for Shipping Containers (2 Pack)

Description and Purposes

- Simple 90-degree turn to lock in place
- Requires 4 per container
- 4.75 KG per stacking pin
- Double ended design to connect two containers
- High quality casted steel construction

CMW-5K-310-0723

Price: \$199.95





shopify

Buy Now

Quick Attach Tie Downs (2 Pack)

(for Anchoring/Bolting Shipping Container to Cement/Rock Floor)

Description and Purposes

- Engineered Design
- Powder Coated Steel
- Sold in sets of 2 (4 per container recommended)



CMW-5K-330-0473

Price: \$249.95



shopify

Buy Now

Quick Attach Container Skids (Left and Right)

Description and Purposes

- Rigging for oilfield winch tractors to safely load shipping containers with multiple connection points for different weights.
- 3/8" grade 8 chain connection – 11,000 lbs
- 1/2" grade 8 chain connection – 23,000 lbs
- Steel cable hooks (dog ears for wire rope) – Up to 60,000 lbs
- Can be permanently welded to corner castings – designed to not interfere with container door swing. These are an inexpensive alternative to purchasing a full oilfield skid. Sold in sets of 2.



CMW-5K-220-0471

Price: \$1499.95 (Set of 2)



shopify

Buy Now

ISO 1611 Corner Castings for Shipping Containers/Sea Cans

Description and Purposes

- Carbon Steel
- Each Casting Weighs 24 lbs
- ISO 1611 compatible

CMW-5K-300-0371

2 Pack Bottom

Price: \$249.95

CMW-5K-300-0372

2 Pack Top

Price: \$249.95

CMW-5K-300-0373

Base Structure - 4 Pack

Price: \$499.95

CMW-5K-300-0374

Over Structure - 4 Pack

Price: \$499.95

CMW-5K-300-0376

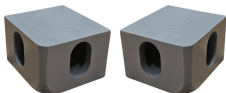
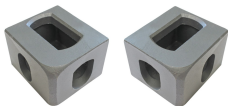
Wall Structure - 4 Pack

Price: \$499.95

CMW-5K-300-0375

Full Set - 8 Pack

Price: \$999.95





shopify

Buy Now

Shipping Container Bridge Fitting Clamp for Sea Cans (2 Pack)

Description and Purposes

- Safely connect shipping containers to each other
- Designed to safely and securely connect empty or loaded shipping containers horizontally
- Made to fit into container corner castings
- 11.5" Length
- Galvanized Steel



CMW-5K-320-0356

Price: \$199.95 (Set of 2)



shopify

Buy Now

G80 SEA Crane Hooks / Lifting Hooks For Shipping Containers / Sea Cans / Cargo

Description and Purposes

- Grade 80
- Designed to securely attach to the eyes of container corner castings
- 12.5 Ton Capacity / Working load limit (WLL) of 28,000 lbs
- 3 Versions Available: Left and right versions for use as slings, as well as a 90-degree version for direct lifting (Left Turn 45, Right Turn 45 and Straight Lift)

CMW-5K-200-0713

Straight Lift

Price: \$124.95

CMW-5K-200-0714

Left Turn 45

Price: \$124.95

CMW-5K-200-0715

Right Turn 45

Price: \$124.95

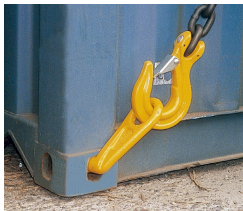
Straight Lift



Left Turn 45°



Right Turn 45°





shopify

Buy Now

Rubber Ramps For Shipping Containers (2 Pack)

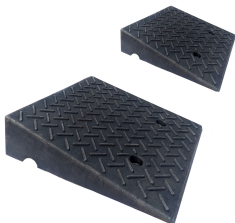
Great for driving into your container with vehicles, ATVs and garden tractors.

Description and Purposes

- Made of High-Density Industrial Grade Rubber/Plastic
- High Strength - Super Durable!
- UV, Petroleum, Solvent, Gas, Element and Extreme Temperature Resistant
- Sold In 2 Packs
- Light Weight
- Easily Store Inside Container When Doors Are Closed
- 500mm" long x 500mm" wide x 140mm" high (each)
- 16 lbs each

CMW-5K-410-0422

Price: \$199.95 (2 pack)





shopify

Buy Now

Bolt On D-Ring Lashing Points for Shipping Containers (3 Pack)

Description and Purposes

- No Welding!
- Laser Cut
- Powder Coated
- Easy Installation
- Hang Shelving Brackets
- Includes Required Hardware



CMW-4K-330-0649

Price: \$199.95 (2 pack)



shopify

Buy Now

CSM
CONTAINER STRUT MOUNT

18" Galvanized Bolt-On Shelving Brackets (2 Pack)

Description and Purposes

- 350 lb load capacity per bracket.
- Easily secures to strut with 3/8" bolts and spring nuts.
- Fully adjustable height along strut.
- Does not include hardware.



CMW-4K-310-0705

Price: \$49.95 (2 pack)



shopify

Buy Now

CSM
CONTAINER STRUT MOUNT

9" Heavy Duty Bolt-On Shelving Brackets (2 pack)

Description and Purposes

- 350 lb load capacity per bracket.
- Easily secures to strut with 3/8" bolts and spring nuts.
- Fully adjustable height along strut.
- Powder Coated – Black Textured.
- Durable and built strong in Canada.
- Does not include hardware.



CMW-4K-310-0368

Price: \$44.95 (2 pack)



shopify

Buy Now

CSM
CONTAINER STRUT MOUNT

Container Strut Mount (CSM) Pipe Rack (16", 20" & 24")

Description and Purposes

- Designed to secure to strut with 3/8" bolts and spring nuts
- Each pipe rack arm is designed to handle 200 lbs per arm
- Min 2 pipe rack arms required
- Requires CSM brackets and strut installed in the container



CMW-4K-310-0362
16+ IN Single Strut Shelving Plate

Price: \$24.95


CMW-4K-310-0364
20+ IN Single Strut Shelving Plate

Price: \$29.95

CMW-4K-310-0366
24+ IN Single Strut Shelving Plate

Price: \$34.95

CURRENTLY AVAILABLE IN CANADA ONLY



Hanging/Hook Shelving Brackets for Shipping Containers and Sea Cans

Description and Purposes

- 22 inches deep, 5 ft. tall, 3 courses
- No screwing or bolting required!
- Does not include lumber.
- Hooks into D-Rings.



CMW-4K-310-0378

Single

Price: \$99.95

CMW-

3 Pack

Price: \$299.95



shopify

Buy Now

42" Side Wall and 48" End Wall Window Framing Kits

NEW & IMPROVED DESIGN!

Framing kits allow for quick and easy installation of any appropriately sized window with a vinyl nailing strip.

*Window not included.

Description and Purposes

- CMW window frames are corrugation dependent. The 42" window frames can only be installed on side wall corrugations and the 48" window frames can only be installed on end wall corrugations.
- Window cutout cap doubles as a marking tool!
- Other than the difference in wall placement and rough opening size the installation of these two frames are the same.
- Includes 58 rivets for 48" window and 54 Rivets for 42" window

CMW-2A-520-0011

42" x 30"

Price: \$394.95

CMW-2A-520-0012

48" x 30"

Price: \$414.95

42" x 30"



48" x 30"



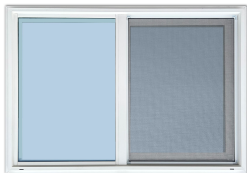


shopify

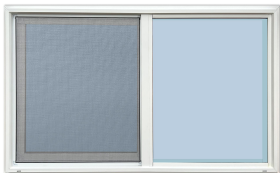
Buy Now

42" Side Wall and 48" End Wall Vinyl Windows

*Window Frames sold separately



42" x 30"



48" x 30"

CMW-2A-520-0011

42" x 30"

Price: \$274.95

CMW-2-510-0509

48" x 30"

Price: \$299.95



shopify

Buy Now

Roll-up Doors

Description and Purposes

Make your container more accessible and easier to open. Can be installed on the sides of the container and is usually used for forklift access or storing garden equipment and ATV's.



Please Contact For Pricing



shopify

Buy Now



Man Door

Description and Purposes

- 36" x 80" steel insulated door
- Galvanized steel frame
- Includes hardware, door lever, rain drip, threshold plate, and door sweep.
- Slimmer 32" x 80" model coming soon!

CMW-2A-110-0006

36" Universal Dual Swinger Frame Only
(36" x 80" Slab Not Included)

Price: \$850

CMW-2K-110-0007

36" Universal Dual Swinger Door & Frame Bundle
(36" x 80" Door Slab, Door Handle and Door Frame)

Price: \$1350

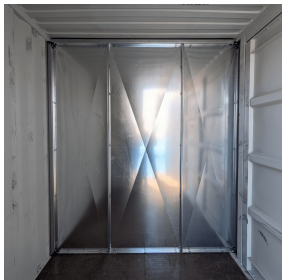




Partition Walls

Description and Purposes

- Partition Walls or Divider Walls allow you to easily divide your container into separate storage compartments which can then be easily accessed through Man Doors or Roll Up Doors.
- These walls can be positioned almost anywhere inside the container and are made of Galvanized Steel.



Please Contact For Pricing



shopify

Buy Now

Container Door Flashing Kit (Standard & High Cube)

Description and Purposes

- Our container door flashing kit provides a clean and durable finish to shipping container doors that are required to remain in use after framing, insulating and lining the interior.
- Galvanized Steel
- Each Kit Provides Flashing For 2 Doors (1 Container)

CMW-4K-410-0651

Standard

Price: \$475

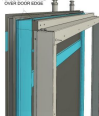
CMW-4K-410-0650

High Cube

Price: \$490



PLACE UP OF FRAME
OVER DOOR EDGE



PLACE UP OF FRAME
OVER DOOR EDGE



FRAME SECURED TO THE
TOP AND SIDES OF DOOR



FRAME SECURED TO THE
TOP AND SIDES OF DOOR





shopify

Buy Now

Door Seals



STANDARD CONTAINER (8' X 8'6")
DOOR GASKET SEAL

CMW-2A-110-0006

Standard Container (8' x 9'6") Door Gasket Seal

Price: \$299.95



HIGH CUBE CONTAINER (8' X 9'6")
DOOR GASKET SEAL

CMW-2K-110-0007

High Cube Container (8' x 8'6") Door Gasket Seal

Price: \$324.95



shopify

Buy Now

CSM
CONTAINER STRUT MOUNT

Container Strut Mount (CSM) Premium Bracket

Description and Purposes

- Laser Cut, Premium black powder coated Container Strut Mount Brackets provide a more finished and presentable look when strut framing is visible (not spray foamed, trade show displays, etc.)
- Laser Cut, Galvanized Container Strut Mount Brackets provide an economical alternative.
- Ideal for installing shelving and electrical panels in shipping containers
- Provides strut framing without welding
- Solves the safety hazard issue of screws poking through the exterior wall
- 10 gauge, 3/16" Thickness
- Each bracket Includes: 1 x Base Bracket, 1 x Angle Bracket, 2 x 1/4" Thread Cutting Bolt, 1 x 5/16" Flange Head Sheet Metal Screw
- Customers are to supply their own strut channel and associated 3/8" bolts, washers & spring nuts.

CMW-4K-110-0357

Container Strut Mount (CSM) Galvanized Finish (1 unit)

Price: \$17.50 (1 Unit)

CMW-4K-110-0358

Container Strut Mount (CSM) Heavy Duty Black Powder Coated Steel (1 unit)

Price: \$22.50



shopify

Buy Now

CSM
CONTAINER STRUT MOUNT

Container Strut Mount (CSM) Premium Upper Decker Roof Bracket (Gen 1)

Description and Purposes

- Ideal for building a rooftop deck using strut channels
- Black Powder Coated Steel

**UPPER
DECKER**
CSM BRACKETS**PREMIUM
BRACKET**
★★★★★

CMW-4K-220-0654

CSM Heavy Duty Upper Decker Roof Bracket Gen 1

Price: \$34.95 (1 Unit)



shopify

Buy Now

CSMI
CONTAINER STRUT MOUNT

Container Strut Mount (CSM) Heavy Duty Upper Decker Roof Bracket

Description and Purposes

- Laser Cut, Premium black powder coated Container Strut Mount Brackets are weather proof and provide a finished and presentable look.
- Mount Solar panels and other components to the exterior roof of your shipping container or sea can.



CMW-4K-210-0652
Container Strut Mount (CSM) Galvanized Roof Bracket

Price: \$29.95 (1 Unit)

CMW-4K-210-0653
Container Strut Mount (CSM) Premium Roof Brackets

Price: \$44.95 (1 Unit)





shopify

Buy Now

CSMI
CONTAINER STRUT MOUNT

Modular Strut Systems (MSS) Standard Strut Mount Brackets

Description and Purposes

- Standard/affordable option for non-visible strut framing
- 10 Gauge Galvanized Steel



CMW-4A-110-0054
MSS Angle Bracket (10 Pack)

Price: \$69.95



CMW-4A-110-0055
MSS Single Bracket (10 Pack)

Price: \$99.95



CMW-4A-110-0056
MSS Exterior Bracket (10 Pack)

Price: \$125.95



CMW-4A-110-0057
MSS Double Bracket (10 Pack)

Price: \$149.95

MODULAR STRUT SYSTEMS



Angle Bracket - Galvanized Finish



1 Way Bracket - Galvanized Finish



2 Way Bracket - Galvanized Finish



Exterior Bracket - Galvanized Finish

20' MSS Every Corrugation

MSS 2-Way

MSS 1-Way



20' End Wall Every Corrugation



20' Side Wall Every Corrugation



shopify

Buy Now



12 Gauge Aluminum Framing Brackets for Steel Stud Framing

Description and Purposes

- 12 Gauge Aluminum Brackets Designed for Steel Stud Framing inside Shipping Containers
- Includes No.8 1/2 Self-Tapping Screws



CMW-4K-120-0800
Steel Stud Bracket
(10 Pack for 10 ft Container)

Price: \$99.95

CMW-4K-120-0801
Steel Stud Bracket
(20 Pack for 20 ft Container)

Price: \$174.95

CMW-4K-120-0802
Steel Stud Bracket
(40 Pack for 40 ft Container)

Price: \$299.95





shopify

Buy Now



Steel Stud Framing Kit

2 Corner Casting Covers with Steel Stud Brackets

Description and Purposes

- This Kit Allows for Easy DIY Installation of Steel Studs Inside a Container
- Corner Casting Covers Connect the Studs and Provide a 2" Gap from the Wall for Spray Foam. Angle Iron Attaches to Casting Covers and Allows for a Drywall Return
- 12 Gauge Aluminum Brackets Designed for Steel Stud Framing Inside Shipping Containers/Sea Cans
- Includes No.8 1/2 Self-Tapping Screws



CMW-4K-120-0720

Steel Stud Bracket

(10 Pack for 10 ft Container)+ 2 Corner Casting Covers

Price: \$199.95

CMW-4K-120-0721

Steel Stud Bracket

(20 Pack for 20 ft Container) + 2 Corner Casting Covers

Price: \$299.95

CMW-4K-120-0722

Steel Stud Bracket

(40 Pack for 40 ft Container) + 2 Corner Casting Covers

Price: \$499.95





shopify

Buy Now



Exterior Wood Framing Bracket Kit

Description and Purposes

- These brackets allow you to easily frame the exterior of a shipping container with wood.
- These brackets are also the perfect solution for building a roof across multiple containers!
- Available in 20 FT & 40 FT container kits
- Includes a pack of $\frac{1}{4}$ " x 20UNC x $\frac{3}{4}$ " L Thread Cutting Screws
- Galvanized Steel
- Patent Pending

CMW-4K-220-0330

20 FT Kit (20 Top + 28 Bottom + Hardware)

Price: \$1,195.95

CMW-4K-220-0331

40 FT Kit (42 Top + 50 Bottom + Hardware)

Price: \$2,195.95

Top Bracket



Bottom Bracket





shopify

Buy Now



Interior Wood Framing Bracket Kit

Description and Purposes

- Galvanized Steel
- Patent Pending
- Available in 10, 20 & 40 Packs
- Interior Wood Stud Brackets are not corrugation dependent. They can be installed anywhere along the interior of the top container tubing
- For 20ft Containers: 20 Interior Wood Stud Brackets, Pack of $\frac{1}{4}$ " x 20UNC x $\frac{3}{4}$ " L Thread Cutting Screws
- For 40ft Containers: 40 Interior Wood Stud Brackets, Pack of $\frac{1}{4}$ " x 20UNC x $\frac{3}{4}$ " L Thread Cutting Screws



CMW-4K-120-0698

10 Pack

Price: \$124.95

CMW-4K-120-0699

20 Pack

Price: \$224.95

CMW-4K-120-0700

40 Pack

Price: \$399.95



shopify

Buy Now



Heavy Duty 120V AC Port Plugs for Shipping Containers

Description and Purposes

- Quick and easy adaptive solution for supplying power to your shipping container when using an extension cord!
- **POWERFUL AC PORT PLUG** - Uses heavy duty wires, single plug rated at 13-amps, and double plug rated at 15-amps
- **UPGRADED VERSION** - Re-design of power cord outlet, located in the center of the back, makes the plug ideal for battery charger, engine block heater, home appliances, etc.
- **WEATHERPROOF** - The snap-fit watertight cap well protects the plug against all the snow, ice, freezing rain and even works well in Canadian winters
- **FLEXIBLE CONNECTION** - 16" integrated extension cord offers plenty of flexibility for your application.
- **EASY INSTALLATION** - Drill a 2" hole where you want to mount this port, secure with 4 screws (included) for a decent OEM look, say goodbye to extra hand wiring or cable modification
- Designed for North America. Outlets and voltage differ internationally and this product may require an adapter or converter for use in your destination. Please check compatibility before purchasing.



CMW-1K-500-0521

Single Plug

Price: \$49.95

CMW-1K-500-0522

Double Plug

Price: \$74.95

CMW-1-500-0552

Inlet Plug - Screw Cap

Price: \$39.95